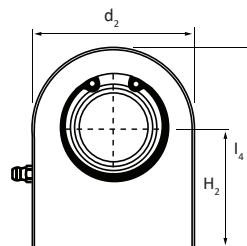
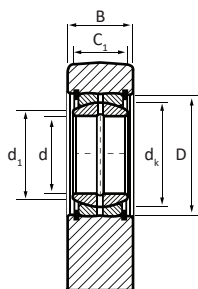


# SCF | RÓTULA DE SOLDAR RECTANGULAR



CÓD.	Dimensões em mm										Graus $\approx \alpha$	Dist. Arestas $r_{1smin}$	Carga		Peso Kg
	d	d <sub>1</sub>	d <sub>2</sub>	d <sub>k</sub>	B <sub>min</sub>	B <sub>máx</sub>	C <sub>1</sub>	D	h <sub>2</sub>	l <sub>4</sub>			C	C <sub>0</sub>	
SCF 20 ES/HM	20	24.10	50	29.00	19.00	20.00	16	35	38	63.00	9	0.6	30	67.00	0.360
SCF 25 ES/HM	25	29.30	55	35.50	23.00	24.00	20	42	45	72.50	7	0.6	48	69.50	0.530
SCF 30 ES/HM	30	34.20	65	40.70	28.00	29.00	22	47	51	83.50	6	0.6	62	118.0	0.850
SCF 35 ES/HM	35	39.70	83	47.00	30.00	31.00	25	55	61	102.5	6	0.6	80	196.0	1.500
SCF 40 ES/HM	40	45.00	100	53.00	35.00	36.50	28	62	69	119.0	7	0.6	100	305.0	2.420
SCF 45 ES/HM	45	50.70	110	60.00	40.00	41.50	32	68	77	132.0	7	0.6	127	386.0	3.390
SCF 50 ES/HM	50	56.00	123	66.00	40.00	41.50	35	75	88	149.5	6	0.6	156	441.0	4.240
SCF 60 ES/HM	60	66.80	140	80.00	50.00	52.56	44	90	100	170.0	6	1.0	245	570.0	7.100
SCF 70 ES/HM	70	77.80	164	92.00	55.00	58.00	49	105	115	197.0	6	1.0	315	724.0	10.70
SCF 80 ES/HM	80	89.40	180	105.0	60.00	63.00	55	120	141	231.0	6	1.0	400	804.0	15.10
SCF 90 ES/HM	90	98.10	226	115.0	65.00	69.00	60	130	150	263.0	5	1.0	490	1340.0	23.50
SCF 100 ES/HM	100	109.5	250	130.0	70.00	74.00	70	150	170	295.0	7	1.0	610	1516.0	33.10
SCF 110 ES/HM	110	121.2	295	140.0	80.00	85.00	70	160	185	332.5	6	1.0	655	2340.0	48.50
SCF 120 ES/HM	120	135.5	360	160.0	90.00	95.00	85	180	210	390.0	6	1.0	950	3210.0	79.50

C - Carga dinâmica  
C<sub>0</sub> - Carga estática