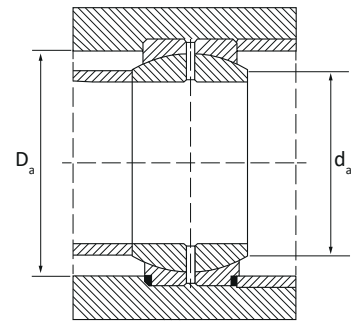
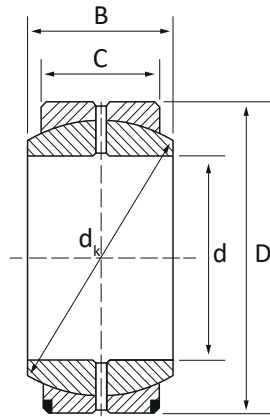


CÓD	Dimensões em mm					Graus $\approx \alpha$	Dim. montagem		Dist. das bordas		Carga		Peso Kg
	d	d <sub>k</sub>	B	C	D		d <sub>e</sub>	D <sub>e</sub>	r <sub>1smin</sub>	r <sub>2smin</sub>	C	C <sub>0</sub>	
	4	-	5	3	12	16	06.00	-	-	-	2	10	0.0033
	5	10	6	4	14	13	07.00	-	-	-		17	0.0038
	6	10	6	4	14	13	08.00	09.60	0.30	0.30	3	17	0.0040
	8	13	8	5	16	15	10.20	12.50	0.30	0.30	6	28	0.0070
	10	16	9	6	19	12	13.20	15.50	0.30	0.30	8	41	0.0110
	12	18	10	7	22	11	14.90	17.50	0.30	0.30	11	54	0.0160
GE 15 ES-2RS	15	22	12	9	26	8	18.40	21.00	0.30	0.30	17	85	0.0250
	16	25	14	10	30	10	20.70	24.00	0.30	0.30	21	106	0.0380
GE 16 ES-2RS	16	25	14	10	30	10	20.70	24.00	0.30	0.30	21	106	0.0380
GE 17 ES-2RS	17	25	14	10	30	10	20.70	24.00	0.30	0.30	21	106	0.0410
GE 20 ES-2RS	20	29	16	12	35	9	24.10	27.50	0.60	0.30	30	146	0.0610
GE 25 ES-2RS	25	36	20	16	42	7	29.30	33.00	0.60	0.60	48	240	0.1100
GE 30 ES-2RS	30	41	22	18	47	6	34.20	38.00	0.60	0.60	62	310	0.1400
GE 35 ES-2RS	35	47	25	20	55	6	39.70	44.50	0.60	1.00	80	400	0.2200
GE 40 ES-2RS	40	53	28	22	62	7	45.00	51.00	0.60	1.00	100	500	0.3000
GE 45 ES-2RS	45	60	32	25	68	7	50.70	57.00	0.60	1.00	127	640	0.4000
GE 50 ES-2RS	50	66	35	28	75	6	55.90	63.00	0.60	1.00	156	780	0.5400
GE 60 ES-2RS	60	80	44	36	90	6	66.80	75.00	1.00	1.00	245	1220	1.0000
GE 70 ES-2RS	70	92	49	40	105	6	77.80	87.00	1.00	1.00	315	1560	1.5000
GE 80 ES-2RS	80	105	55	45	120	6	89.40	99.00	1.00	1.00	400	2000	2.2000
	90	115	60	50	130	5	98.10	108.0	1.00	1.00	490	2450	2.7000
GE 90 ES-2RS	90	115	60	50	130	5	98.10	108.0	1.00	1.00	490	2450	2.7000
	100	130	70	55	150	7	109.5	123.0	1.00	1.00	610	3050	4.3000
GE 100 ES-2RS	100	130	70	55	150	7	109.5	123.0	1.00	1.00	610	3050	4.3000
	110	140	70	55	160	6	121.2	134.0	1.00	1.00	655	3250	4.7000
GE 110 ES-2RS/HM	110	140	70	55	160	6	121.2	134.0	1.00	1.00	655	3250	4.7000
	120	160	85	70	180	6	135.5	150.0	1.00	1.00	950	4750	8.0000
GE 120 ES-2RS	120	160	85	70	180	6	135.5	150.0	1.00	1.00	950	4750	8.0000
GE 140 ES-2RS	140	180	90	70	210	7	155.8	173.0	1.00	1.00	1080	5400	11.0000
	140	180	90	70	210	7	155.8	173.0	1.00	1.00	1080	5400	11.0000

C - Carga dinâmica  
C<sub>0</sub> - Carga estática

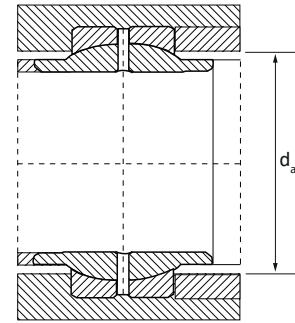
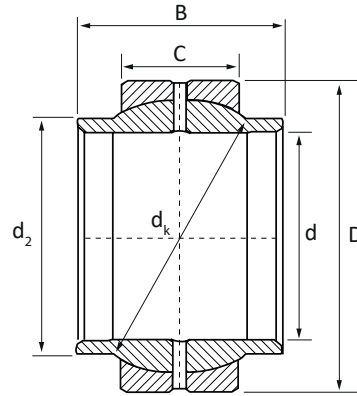
CÓD	Dimensões em mm					Graus	Dim. montagem		Dist. das bordas		Carga		Peso
	d	d <sub>k</sub>	B	C	D	≈α	d <sub>e</sub>	D <sub>e</sub>	r <sub>1smin</sub>	r <sub>2smin</sub>	C	C <sub>0</sub>	Kg
	160	200	105	80	230	8	170.2	191.0	1.00	1.00	1370	6800	13.500
	160	200	105	80	230	8	170.2	191.0	1.00	1.00	1370	6800	13.500
	180	225	105	80	260	6	198.9	219.0	1.10	1.10	1530	7650	18.500
	180	225	105	80	260	6	198.9	219.0	1.10	1.10	1530	7650	18.500
	200	250	130	100	290	7	213.5	239.0	1.10	1.10	2120	10600	28.000
	200	250	130	100	290	7	213.5	239.0	1.10	1.10	2120	10600	28.000
	220	275	135	100	320	8	239.5	267.0	1.10	1.10	2320	11600	35.500
	220	270	135	100	320	8	239.5	267.0	1.10	1.10	2320	11600	35.500
	240	300	140	100	340	8	265.3	295.0	1.10	1.10	2550	12700	40.000
	240	300	140	100	340	8	262.3	295.0	1.10	1.10	2550	12700	40.000
	260	325	150	110	370	7	288.3	319.0	1.10	1.10	3050	15300	50.000
	260	325	150	110	370	7	288.3	319.0	1.10	1.10	3050	15300	50.000
	280	350	155	120	400	6	313.8	342.0	1.10	1.10	3550	18000	64.000
	280	350	155	120	400	6	313.8	342.0	1.10	1.10	3550	1800	64.000
	300	375	165	120	430	7	336.7	370.0	1.10	1.10	3800	19000	75.000
	300	375	165	120	430	7	336.7	370.0	1.10	1.10	3800	19000	75.000
	320	380	160	135	440	4	344.6	361.0	1.10	3.00	4400	22000	77.000
	340	400	160	135	460	3.80	366.6	382.0	1.10	3.00	4650	23200	82.000
	360	420	160	135	480	3.60	388.3	403.0	1.10	3.00	4800	12000	88.000
	380	450	190	160	520	4.10	407.9	426.0	1.50	4.00	6300	31500	127.00
	400	470	190	160	540	3.90	429.8	447.0	1.50	4.00	6550	32500	132.00
	420	490	190	160	560	3.70	451.6	469.0	1.50	4.00	6800	34500	145.00
	440	520	218	185	600	3.90	472.0	491.0	1.50	4.00	8650	42300	190.00
	460	540	218	185	620	3.70	494.0	513.0	1.50	4.00	9000	45000	200.00
	480	565	230	195	650	3.80	516.0	536.0	2.00	5.00	9800	49000	237.00
	500	585	230	195	670	3.60	537.8	557.0	2.00	5.00	10200	51000	244.00
	530	620	243	205	710	3.70	570.3	591.0	2.00	5.00	11400	57000	290.00
	560	655	258	215	50	4.00	602.0	624.0	2.00	5.00	12700	64000	340.00
	600	700	272	230	800	3.60	644.9	667.0	2.00	5.00	14600	73500	409.00
	630	740	300	260	840	3.30	676.4	698.0	3.00	6.00	17600	88000	526.00
	670	785	308	260	900	3.70	722.0	746.0	3.00	6.00	19000	95000	596.00
	710	830	325	275	950	3.70	763.7	789.0	3.00	6.00	21200	106000	693.00
	750	875	335	280	1000	3.80	808.3	834.0	3.00	6.00	22800	114000	784.00
	800	930	355	300	1060	3.60	859.5	886.0	3.00	6.00	26000	129000	925.00
	850	985	365	310	1120	3.40	914.8	940.0	3.00	6.00	28500	143000	1055.0
	900	1040	375	320	1180	3.20	970.0	995.0	3.00	6.00	31000	156000	1190.0
	950	1100	400	340	1250	3.30	1024.6	1052.4	4.00	7.50	35500	176000	1424.0
	1000	1160	438	370	1320	3.50	1074.1	1105.0	4.00	7.50	40500	204000	1755.0

C - Carga dinâmica  
C<sub>0</sub> - Carga estática



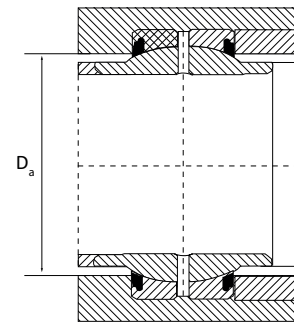
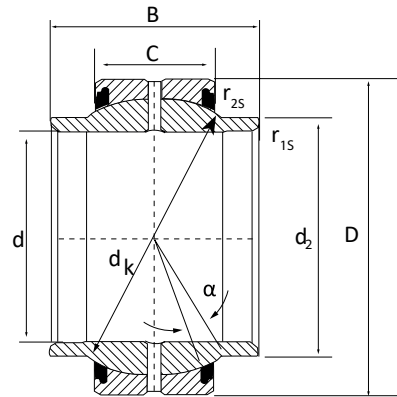
CÓD	Dimensões em mm						Graus $\approx \alpha$	Dim. montagem		Dist. das bordas		Carga		Peso Kg
	d H7	d <sub>2</sub>	d <sub>k</sub>	B	C	D		d <sub>e</sub>	D <sub>e</sub>	r <sub>1smin</sub>	r <sub>2smin</sub>	C	C <sub>0</sub>	
GEG 12 ES	12	15.50	18.00	12	7	22	4	-	18	0.30	0.30	10.80	54	0.0200
	15	18.50	-	15	9	26	5	-	-	-	-	17.00	85	0.0310
	16	20.00	23.00	16	9	28	4	-	23	0.30	0.30	17.60	88	0.0300
	17	21.00	-	17	10	30	7	-	-	-	-	21.00	106	0.0440
GEG 20 ES	20	25.00	29.00	20	12	35	4	-	28	0.30	0.30	30.00	146	0.0700
GEG 25 ES	25	30.00	35.50	25	16	42	4	-	33	0.60	0.60	48.00	240	0.1200
	30	34.00	-	30	18	47	4	-	-	-	-	62.00	310	0.1680
GEG 32 ES	32	38.00	44.00	32	18	52	4	-	42	0.60	1.00	67.00	335	0.200
	35	40.00	-	35	20	55	4	-	-	-	-	80.00	400	0.2530
GEG 40 ES	40	46.00	53.00	40	22	62	4	-	51	0.60	1.00	100.0	500	0.3400
GEG 45 ES	45	52.00	-	45	25	68	4	-	-	-	-	127.0	640	0.4810
GEG 50 ES	50	57.00	66.00	50	28	75	4	-	63	1.00	1.00	156.0	780	0.5600
	60	68.00	-	60	36	90	3	-	-	-	-	245.0	1220	1.1500
	63	71.50	83.00	63	36	95	4	-	78	-	-	255.0	1270	1.2000
	70	79.00	92.00	70	40	105	4	-	87	1.00	1.00	315.0	1560	1.7000
	80	91.00	105.0	80	45	120	4	-	99	1.00	1.00	400.0	2000	2.4000
	90	99.00	115.0	90	50	130	4	-	108	1.00	1.00	490.0	2450	3.2000
	100	113.0	130.0	100	55	150	4	-	123	1.00	1.00	610.0	3050	4.8000
	110	124.0	140.0	110	55	160	4	-	134	1.00	1.00	655.0	3250	5.8000
	125	138.0	160.0	125	70	180	4	-	150	1.00	1.00	950.0	4750	8.5000
	160	177.0	200.0	160	80	230	4	-	191	1.00	1.00	1370	6800	16.500
	200	221.0	250.0	200	100	290	4	-	239	1.10	1.10	2120	10600	32.000
	250	317	350	250	120	400	4	-	342	1.10	1.10	3.55	18.00	99.000
	320	405	450	320	160	520	4	-	438	1.10	1.10	6.10	30.50	240.00

C - Carga dinâmica  
C<sub>0</sub> - Carga estática

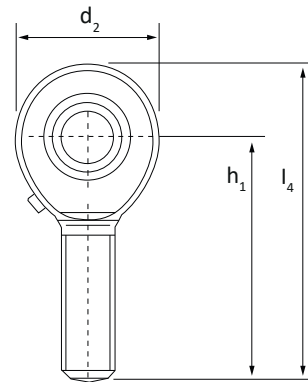
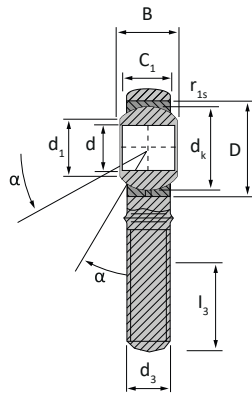


CÓD	Dimensões em mm					Graus ≈α	Dim. montagem		Dist. das bordas		Carga		Peso Kg
	d	dk	B	C	D		de	De	r <sub>1smin</sub>	r <sub>2smin</sub>	C	C <sub>0</sub>	
	4	-	7	4	14	20	07.00	-	-	-	03.40	017.0	0.0045
	5	-	9	5	16	21	08.00	-	-	-	05.50	027.0	0.0066
GEH 6 E	6	13	9	5	16	21	09.30	12.50	0.30	0.30	05.50	027.5	0.0040
	8	16	11	6	19	21	11.60	15.50	0.30	0.30	08.15	040.5	0.0140
GEH 12 C	10	18	12	7	22	18	13.40	17.50	0.30	0.30	010.8	054.0	0.0200
	12	22	15	9	26	18	16.00	21.00	0.30	0.30	017.0	085.0	0.0340
GEH 15 ES-2RS	15	25	16	10	30	16	19.20	21.00	0.30	0.30	021.2	106.0	0.0460
GEH 17 ES-2RS	17	29	20	12	35	19	21.00	27.50	0.30	0.30	030.0	146.0	0.0780
GEH 20 ES-2RS	20	35.5	25	16	42	17	25.20	33.00	0.30	0.60	048.0	240.0	0.1500
GEH 25 ES-2RS	25	40.7	28	18	47	17	29.50	38.00	0.60	0.60	062.0	310.0	0.1900
GEH 30 ES-2RS	30	47	32	20	55	17	34.40	44.50	0.60	1.00	080.0	400.0	0.2900
GEH 35 ES-2RS	35	53	35	23	62	16	39.70	51.00	0.60	1.00	100.0	500.0	0.3900
GEH 40 ES-2RS	40	60	40	25	68	17	44.70	57.00	0.60	1.00	127.0	640.0	0.5200
GEH 45 ES-2RS	45	66	43	28	75	15	50.00	63.00	0.60	1.00	156.0	780.0	0.6800
GEH 50 ES-2RS	50	80	56	36	90	17	57.10	75.00	0.60	1.00	245.0	1220.0	1.4000
GEH 60 ES-2RS	60	92	63	40	105	17	67.00	87.00	0.60	1.00	315.0	1560.0	2.0000
GEH 70 ES-2RS	70	105	70	45	120	16	78.20	99.00	1.00	1.00	400.0	2000.0	2.9000
GEH 80 ES-2RS	80	115	75	50	130	14	87.10	108.0	1.00	1.00	490.0	2450.0	3.5000
	90	130	85	55	150	15	98.30	123.0	1.00	1.00	610.0	3050.0	5.4000
GEH 100 ES-2RS	100	140	85	55	160	14	111.2	134.0	1.00	1.00	655.0	3250.0	5.9000
	110	160	100	70	180	12	124.8	150.0	1.00	1.00	950.0	4750.0	9.7000
	120	180	115	70	210	16	138.4	173.0	1.00	1.00	1080.0	5400.0	15.000
GEH 140 ES-2RS	140	200	130	80	230	16	151.9	191.0	1.00	1.00	1370.0	6800.0	18.500
	160	225	135	80	260	16	180.0	219.0	1.00	1.10	1530.0	7650.0	25.000
	180	250	155	100	290	14	196.1	239.0	1.10	1.10	2120.0	10600	35.500
	200	275	165	100	320	15	220.0	267.0	1.10	1.10	2320.0	11600	45.000
	220	300	175	100	340	16	243.6	295.0	1.10	1.10	2550.0	12700	51.000
	240	325	190	110	370	15	263.6	319.0	1.10	1.10	3050.0	15300	64.000
	260	350	205	120	400	15	283.6	342.0	1.10	1.10	3550.0	18000	81.000
	280	375	210	120	430	15	310.6	370.0	1.10	1.10	3800.0	19000	94.000

C - Carga dinâmica  
 C<sub>0</sub> - Carga estática



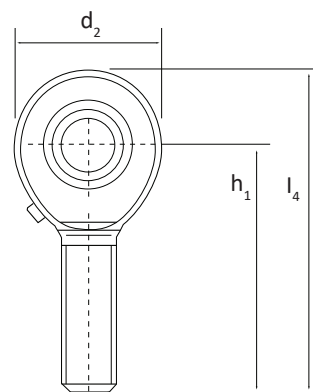
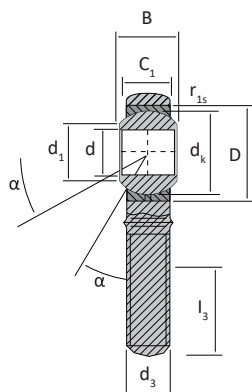
CÓD	Dimensões em mm						Graus $\approx \alpha$	D i m . monta- gem $D_{a \text{ min}}$	Dist. das bordas		Carga		Peso Kg
	d	$d_2$	$d_k$	B	C	D			$r_{1 \text{ smin}}$	$r_{2 \text{ smin}}$	C	$C_0$	
	17	21	25	21±0.2	10	30	3	24	0.20	0.30	21.20	106	0.040
	20	24	29	24±0.2	12	35	3	27.5	0.20	0.30	30	146	0.057
GEM 25 ES-2RS	25	29	35.5	29±0.3	16	42	3	33	0.20	0.60	48	240	0.10
GEM 30 ES-2RS	30	34.2	40.7	30±0.3	18	47	3	38	0.20	0.60	62	310	0.14
GEM 35 ES-2RS	35	40	47	35±0.3	20	55	3	44.5	0.30	1	80	400	0.24
GEM 40 ES-2RS	40	45	53	38±0.3	22	62	3	51	0.30	1	100	500	0.29
GEM 45 ES-2RS	45	51.5	60	40±0.3	25	68	3	57	0.30	1	127	640	0.43
	50	56.5	66	43±0.3	28	75	3	63	0.30	1	156	780	0.54
GEM 60 ES-2RS	60	67.7	80	54±0.3	36	90	3	75	0.30	1	245	1 220	1.10
GEM 70 ES-2RS	70	78	92	65±0.3	40	105	3	87	0.30	1	315	1 560	1.60
	80	90	105	74±0.3	45	120	3	99	0.30	1	400	2 000	2.40



Requer manutenção. mediante lubrificação do furo ou do alojamento.

CÓD.	Dimensões em mm																	Graus	Dist. das bordas	Carga		Peso
	d	d <sub>1</sub>	d <sub>2</sub>	d <sub>3</sub>	d <sub>4</sub>	d <sub>5</sub>	d <sub>K</sub>	B	C <sub>1</sub>	D	h <sub>1</sub>	l <sub>3</sub>	l <sub>4</sub>	l <sub>5</sub>	l <sub>7</sub>	W	≈α	r <sub>1smin</sub>	C	C <sub>0</sub>	Kg	
	5	07.70	16	M05 x 0.80	-	-	11.11	8	6.00	13	33	20	41	-	-	-	13	0.3	3.30	04.1	0.013	
SAKAC 6 M/HM	6	08.90	18	M06 x 1.00	-	-	12.70	9	6.70	16	36	22	45	-	-	-	13	0.3	4.30	05.3	0.020	
SAKAC 8 M/HM	8	10.30	22	M08 x 1.25	-	-	15.88	12	9.00	19	42	25	53	-	-	-	14	0.3	6.80	09.2	0.030	
SAKAC 10 M/HM	10	12.90	26	M10 x 1.50	-	-	19.05	14	10.5	22	48	29	61	-	-	-	13	0.3	10.0	12.0	0.050	
SAKAC 12 M/HM	12	15.40	30	M12 x 1.75	-	-	22.23	16	12.0	26	54	33	69	-	-	-	13	0.3	13.0	17.0	0.085	
SAKAC 12-1 M/HM	12	15.40	30	M12 x 1.25	-	-	22.23	16	12.0	26	54	33	69	-	-	-	13	0.3	13.0	17.0	0.085	
SAKAC 14 M/HM	14	16.80	34	M14 x 2.00	-	-	25.40	19	13.5	28	60	36	77	-	-	-	16	0.3	17.0	22.0	0.120	
SAKAC 16 M/HM	16	19.30	40	M16 x 2.00	-	-	28.58	21	15.0	32	66	40	85	-	-	-	15	0.3	21.0	28.0	0.180	
	16	19.30	40	M16 x 1.50	-	-	28.58	21	15.0	32	66	40	85	-	-	-	15	0.3	21.0	28.0	0.180	
	17	20.60	42	M16 x 1.50	-	-	30.16	11	16.0	-	69	42	88	-	-	-	15	0.3	22.0	45.0	0.230	
	18	21.80	44	M18 x 1.50	-	-	31.75	23	16.5	35	72	44	93	-	-	-	15	0.3	26.0	34.0	0.260	
SAKAC 20 M/HM	20	24.30	50	M20 x 1.50	-	-	34.93	25	18.0	40	78	47	101	-	-	-	14	0.3	31.0	40.0	0.340	
SAKAC 22 M/HM	22	25.80	50	M22 x 1.50	-	-	38.10	28	20.0	42	84	51	109	-	-	-	15	0.3	38.0	50.0	0.430	
SAKAC 25 M/HM	25	29.50	60	M14 x 2.00	-	-	42.85	31	22.0	47	94	57	124	-	-	-	15	0.3	47.0	63.0	0.640	
	28	32.30	66	M27 x 2.00	-	-	47.60	35	25.0	-	103	62	136	-	-	-	15	0.3	59.0	81.0	0.870	
SAKAC 30 M/HM	30	34.80	70	M30 x 2.00	-	-	50.80	37	25.0	55	110	66	145	-	-	-	17	0.3	63.0	86.0	1.000	

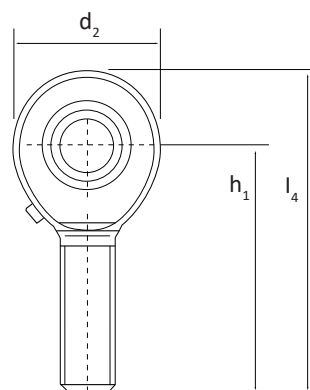
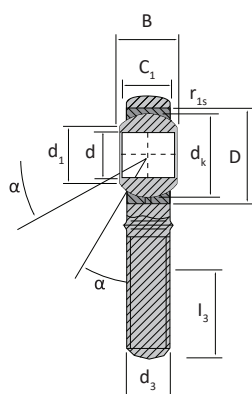
C - Carga dinâmica  
C<sub>0</sub> - Carga estática



Requer manutenção. mediante lubrificação do furo ou do alojamento.

CÓD.	Dimensões em mm																Graus $\approx \alpha$	Dist. das bordas $r_{1smin}$	Carga		Peso Kg
	d	d <sub>1</sub>	d <sub>2</sub>	d <sub>3</sub>	d <sub>4</sub>	d <sub>5</sub>	d <sub>K</sub>	B	C <sub>1</sub>	D	h <sub>1</sub>	l <sub>3</sub>	l <sub>4</sub>	l <sub>5</sub>	l <sub>7</sub>	W			C	C <sub>0</sub>	
	5	07.70	16	M05 x 0.80	-	-	11.11	8	6.00	13	33	20	41	-	-	-	13	0.3	3.30	04.1	0.013
	6	08.90	18	M06 x 1.00	-	-	12.70	9	6.70	16	36	22	45	-	-	-	13	0.3	4.30	05.3	0.020
	8	10.30	22	M08 x 1.25	-	-	15.88	12	9.00	19	42	25	53	-	-	-	14	0.3	6.80	09.2	0.030
SALKAC 10 M/HM	10	12.90	26	M10 x 1.50	-	-	19.05	14	10.5	22	48	29	61	-	-	-	13	0.3	10.0	12.0	0.050
SALKAC 12 M	12	15.40	30	M12 x 1.75	-	-	22.23	16	12.0	26	54	33	69	-	-	-	13	0.3	13.0	17.0	0.085
SALKAC 12 M/HM	12	15.40	30	M12 x 1.25	-	-	22.23	16	12.0	26	54	33	69	-	-	-	13	0.3	13.0	17.0	0.085
SALKAC 14 M/HM	14	16.80	34	M14 x 2.00	-	-	25.40	19	13.5	28	60	36	77	-	-	-	16	0.3	13.0	22.0	0.120
	16	19.30	40	M16 x 2.00	-	-	28.58	21	15.0	32	66	40	85	-	-	-	15	0.3	21.0	28.0	0.180
SALKAC 16 M/HM	16	19.30	40	M16 x 1.50	-	-	28.58	21	15.0	32	66	40	85	-	-	-	15	0.3	21.0	28.0	0.180
SALKAC 17 M/HM	17	20.60	42	M16 x 1.50	-	-	30.16	22	16.0	-	69	42	88	-	-	-	15	0.3	22.0	45.0	0.230
SAKAC 16 M/HM	18	21.80	44	M18 x 1.50	-	-	31.75	23	16.5	35	72	44	93	-	-	-	15	0.3	26.0	34.0	0.260
SALKAC 20 M/HM	20	24.30	50	M20 x 1.50	-	-	34.93	25	18.0	40	78	47	101	-	-	-	14	0.3	31.0	40.0	0.340
SALKAC 22 M/HM	22	25.80	50	M22 x 1.50	-	-	38.10	28	20.0	42	84	51	109	-	-	-	15	0.3	38.0	50.0	0.430
SALKAC 25 M/HM	25	29.50	60	M24 x 2.00	-	-	42.85	31	22.0	47	94	57	124	-	-	-	15	0.3	47.0	63.0	0.640
	28	32.30	66	M27 x 2.00	-	-	47.60	35	25.0	-	103	62	136	-	-	-	15	0.3	59.0	81.0	0.870
	30	34.80	70	M30 x 2.00	-	-	50.80	37	25.0	55	110	66	145	-	-	-	17	0.3	63.0	86.0	1.000

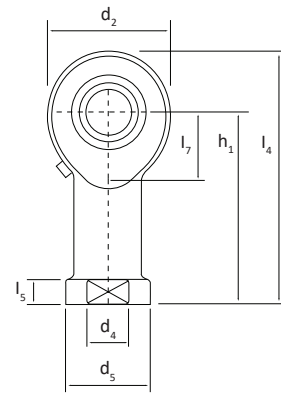
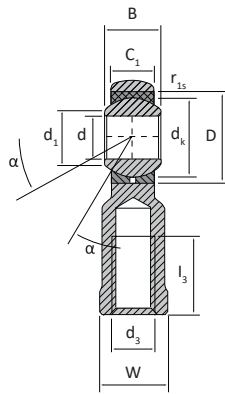
C - Carga dinâmica  
C<sub>0</sub> - Carga estática



Requer manutenção. mediante lubrificação do furo ou do alojamento.

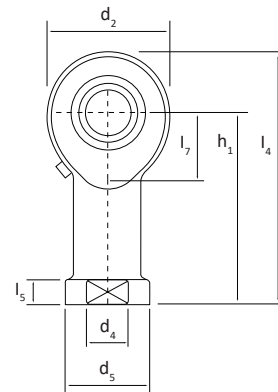
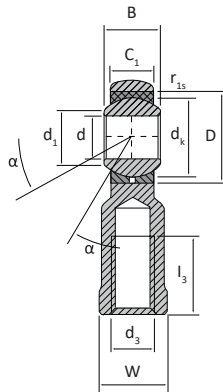
CÓD.	Dimensões em mm																Graus $\approx \alpha$	Dist. das bordas		Carga		Peso Kg
	d	d <sub>1</sub>	d <sub>2</sub>	d <sub>3</sub>	d <sub>4</sub>	d <sub>5</sub>	d <sub>k</sub>	B	C <sub>1</sub>	D	h <sub>1</sub>	l <sub>3</sub>	l <sub>4</sub>	l <sub>5</sub>	l <sub>7</sub>	W		r <sub>1smin</sub>	C	C <sub>0</sub>		
	5	07.00	21	M05 x 0.80	10.0	13.0	-	6	4.40	-	30	11	40.5	05.0	-	10	13	0.3	3.40	8.10	0.016	
SI 6 E/HM	6	08.00	21	M06 x 1.00	10.5	13.0	10.00	6	4.40	14	30	11	40.5	05.0	10.5	11	13	0.3	3.40	8.15	0.021	
	8	10.20	24	M08 x 1.25	12.0	15.0	13.00	8	6.00	16	36	15	48.0	05.0	12.0	13	15	0.3	5.50	12.9	0.039	
SI 10 E	10	13.20	29	M10 x 1.50	15.0	18.0	16.00	9	7.00	19	43	20	57.5	06.5	14.0	15	12	0.3	8.15	17.6	0.061	
	12	15.00	34	M12 x 1.75	17.0	20.0	18.00	10	8.00	22	50	24	67.0	06.5	17.5	18	11	0.3	10.8	24.5	0.096	
	15	18.40	40	M14 x 2.00	20.0	24.0	22.00	12	10.0	26	61	30	81.0	08.0	20.0	21	8	0.3	17.0	36.0	0.180	
SI 17 ES	17	20.70	46	M16 x 2.00	23.0	28.0	25.00	14	11.0	30	67	34	90.0	10.0	23.0	24	10	0.3	21.2	45.0	0.220	
SI 17 ES/HM	17	20.70	46	M16 x 2.00	23.0	28.0	25.00	14	11.0	30	67	34	90.0	10.0	23.0	24	10	0.3	21.2	45.0	0.220	
SI 20 ES-2RS	20	24.10	53	M20 x 1.50	27.5	35.0	29.00	16	13.0	35	77	40	103.5	10.0	27.5	32	9	0.6	30.0	60.0	0.350	
	20	24.10	53	M20 x 1.50	27.5	35.0	29.00	16	13.0	35	77	40	103.5	10.0	27.5	32	9	0.6	30.0	60.0	0.350	
	25	29.30	64	M24 x 2.00	33.5	42.0	35.50	20	17.0	42	94	48	126	12.0	32	36	7	0.6	48.0	83.0	0.640	
	25	29.30	64	M24 x 2.00	33.5	42.0	35.50	20	17.0	42	94	48	126	12.0	32	36	7	0.6	48.0	83.0	0.640	
SI 30 ES-2RS	30	34.20	73	M30 x 2.00	40.0	50.0	40.70	22	19.0	47	110	56	146.5	15.0	37	41	6	0.6	62.0	110	0.930	
SI 30 ES-2RS/HM	30	34.20	73	M30 x 2.00	40.0	50.0	40.70	22	19.0	47	110	56	146.5	15.0	37	41	6	0.6	62.0	110	0.930	
SI 35 ES-2RS	35	39.70	82	M36 x 3.00	47.0	58.0	47.00	25	21.0	55	125	60	166	15.0	42	50	6	0.6	80.0	146	1.300	
	35	39.70	82	M36 x 3.00	47.0	58.0	47.00	25	21.0	55	125	60	166	15.0	42	50	6	0.6	80.0	146	1.300	
	40	45.00	92	M39 x 3.00	52.0	65.0	53.00	28	23.0	62	142	67	188	18.0	48	55	7	0.6	100	180	2.000	
	40	45.00	92	M39 x 3.00	52.0	65.0	53.00	28	23.0	62	142	67	188	18.0	48	55	7	0.6	100	180	2.000	
	45	50.70	102	M42 x 3.00	58.0	70.0	60.00	32	27.0	68	145	65	196	20.0	52	60	7	0.6	127	240	2.500	
	45	50.70	102	M42 x 3.00	58.0	70.0	60.00	32	27.0	68	145	65	196	20.0	52	60	7	0.6	127	240	2.500	
	50	56.00	112	M45 x 3.00	62.0	75.0	66.00	35	30.0	75	160	69	216	20.0	59	65	6	0.6	156	290	3.500	
	50	56.00	112	M45 x 3.00	62.0	75.0	66.00	35	30.0	75	160	69	216	20.0	59	65	6	0.6	156	290	3.500	
	60	66.80	135	M52 x 3.00	70.0	88.0	80.00	44	38.0	90	175	73	242	20.0	75	75	6	1.0	245	450	5.900	
	60	66.80	135	M52 x 3.00	70.0	88.0	80.00	44	38.0	90	175	73	242	20.0	75	75	6	1.0	245	450	5.900	
	70	77.80	160	M56 x 4.00	80.0	98.0	92.00	49	42.0	105	200	80	280	20.0	87	85	6	1.0	315	610	8.600	
	70	77.80	160	M56 x 4.00	80.0	98.0	92.00	49	42.0	105	200	80	280	20.0	87	85	6	1.0	315	610	8.600	
	80	89.40	180	M64 x 4.00	95.0	110	105.00	55	47.0	120	230	85	320	25.0	100	100	6	1.0	400	695	12.00	
	80	89.40	180	M64 x 4.00	95.0	110	105.00	55	47.0	120	230	85	320	25.0	100	100	6	1.0	400	695	12.00	

C - Carga dinâmica  
C<sub>0</sub> - Carga estática



Requer manutenção. mediante lubrificação do furo ou do alojamento.

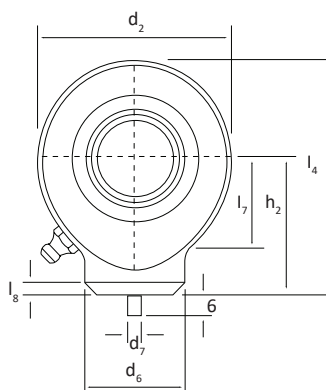
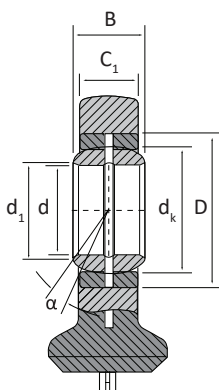
CÓD.	Dimensões em mm																Graus $\approx \alpha$	Dist. das bordas $r_{1smin}$	Carga		Peso Kg
	d	d <sub>1</sub>	d <sub>2</sub>	d <sub>3</sub>	d <sub>4</sub>	d <sub>5</sub>	d <sub>K</sub>	B	C <sub>1</sub>	D	h <sub>1</sub>	l <sub>3</sub>	l <sub>4</sub>	l <sub>5</sub>	l <sub>7</sub>	W			C	C <sub>0</sub>	
SIKAC 5 M/HM	5	07.70	16	M05 x 0.80	09.0	11.0	11.11	8	6.00	13	27	14	35	04.0	10	9	13	0.3	3.25	04.1	0.016
SIKAC 6 M/HM	6	09.00	18	M06 x 1.00	10.0	13.0	12.70	9	6.75	16	30	14	39	05.0	11	11	13	0.3	4.30	05.3	0.022
SIKAC 8 M/HM	8	10.40	22	M08 x 1.25	12.5	16.0	15.88	12	9.00	19	36	17	47	05.0	13	14	14	0.3	6.80	09.2	0.030
SIKAC 10 M/HM	10	12.90	26	M10 x 1.50	15.0	19.0	19.05	14	10.5	22	43	21	56	06.5	15	17	13	0.3	10.0	12.0	0.080
SIKAC 10-1 M/HM	10	12.90	26	M10 x 1.50	15.0	19.0	19.05	14	10.5	22	43	21	56	06.5	15	17	13	0.3	10.0	12.0	0.080
SIKAC 12 M/HM	12	15.40	30	M12 x 1.75	17.5	22.0	22.23	16	12.0	26	50	24	65	06.5	17	19	13	0.3	13.0	17.0	0.120
SIKAC 12-1 M/HM	12	15.40	30	M12 x 1.75	17.5	22.0	22.23	16	12.0	26	50	24	65	06.5	17	19	13	0.3	13.0	17.0	0.120
SIKAC 14 M/HM	14	16.90	34	M14 x 2.00	20.0	25.0	25.40	19	13.5	28	57	27	74	08.0	18	22	16	0.3	17.0	22.0	0.140
SIKAC 14-1 M/HM	14	16.90	34	M14 x 2.00	20.0	25.0	25.40	19	13.5	28	57	27	74	08.0	18	22	16	0.3	17.0	22.0	0.140
SIKAC 15 M/HM	15	18.12	36	M14 x 2.00	22.0	26.0	26.99	20	14.0	-	61	30	79	08.0	-	22	-	0.3	19.0	26.0	0.180
SIKAC 16 M/HM	16	19.40	40	M16 x 2.00	22.0	27.0	28.58	21	15.0	32	64	33	83	08.0	23	22	15	0.3	21.0	28.0	0.220
SIKAC 16-1 M/HM	16	19.40	40	M16 x 2.00	22.0	27.0	28.58	21	15.0	32	64	33	83	08.0	23	22	15	0.3	21.0	28.0	0.220
SIKAC 17 M/HM	17	20.60	42	M16 x 1.50	25.0	31.0	30.16	22	16.0	-	67	34	88	10.0	-	27	15	0.3	22.0	30.0	0.260
SIKAC 18 M/HM	18	21.90	44	M18 x 1.50	25.0	31.0	31.75	23	16.5	35	71	36	92	10.0	25	27	15	0.3	26.0	34.0	0.320
SIKAC 20 M/HM	20	24.40	50	M20 x 1.50	27.5	34.0	34.93	25	18.0	40	77	40	100	10.0	26	30	14	0.3	31.0	40.0	0.420
SIKAC 22 M/HM	22	25.80	50	M22 x 1.50	30.0	37.0	38.10	28	20.0	42	84	43	109	12.0	29	32	15	0.3	38.0	50.0	0.610
SIKAC 25 M/HM	25	29.60	60	M24 x 2.00	33.5	42.0	42.85	31	22.0	47	94	48	124	12.0	32	36	15	0.3	47.0	63.0	0.810
SIKAC 28 M/HM	28	32.30	66	M27 x 2.00	37.0	46.0	47.59	35	25.0	-	103	53	136	12.0	34	41	15	0.3	59.0	81.0	1.200
SIKAC 30 M/HM	30	34.80	70	M30 x 2.00	40.0	50.0	50.80	37	25.0	55	110	56	145	15.0	37	41	17	0.3	63.0	86.0	1.400
C - Carga dinâmica C <sub>0</sub> - Carga estática	30	34.80	70	M27 x 2.00	40.0	50.0	50.80	37	25.0	55	110	60	145	15.0	37	41	17	0.3	63.0	86.0	1.400



Requer manutenção. mediante lubrificação do furo ou do alojamento.

CÓD.	Dimensões em mm																Graus ≈α	Dist. das bordas r <sub>1smin</sub>	Carga		Peso Kg
	d	d <sub>1</sub>	d <sub>2</sub>	d <sub>3</sub>	d <sub>4</sub>	d <sub>5</sub>	d <sub>K</sub>	B	C <sub>1</sub>	D	h <sub>1</sub>	l <sub>3</sub>	l <sub>4</sub>	l <sub>5</sub>	l <sub>7</sub>	W			C	C <sub>0</sub>	
SILKAC 5 M/HM	5	07.70	16	M05 x 0.80	09.0	11.0	11.11	8	6.00	13	27	14	35	04.0	10	9	13	0.3	3.25	04.1	0.016
SILKAC 6 M/HM	6	09.00	18	M06 x 1.00	10.0	13.0	12.70	9	6.75	16	30	14	39	05.0	11	11	13	0.3	4.30	05.3	0.022
SILKAC 8 M/HM	8	10.40	22	M08 x 1.25	12.5	16.0	15.88	12	9.00	19	36	17	47	05.0	13	14	14	0.3	6.80	09.2	0.030
SILKAC 10 M/HM	10	12.90	26	M10 x 1.50	15.0	19.0	19.05	14	10.5	22	43	21	56	06.5	15	17	13	0.3	10.0	12.0	0.080
	10	12.90	26	M10 x 1.25	15.0	19.0	19.05	14	10.5	22	43	21	56	06.5	15	17	13	0.3	10.0	12.0	0.080
SILKAC 12 M/HM	12	15.40	30	M12 x 1.75	17.5	22.0	22.23	16	12.0	26	50	24	65	06.5	17	19	13	0.0	13.0	17.0	0.120
	12	15.40	30	M12 x 1.25	17.5	22.0	22.23	16	12.0	26	50	24	65	06.5	17	19	13	0.3	13.0	17.0	0.120
SILKAC 14 M/HM	14	16.90	34	M14 x 2.00	20.0	25.0	25.40	19	13.5	28	57	27	74	08.0	18	22	16	0.3	17.0	22.0	0.140
	14	16.90	34	M14 x 1.50	20.0	25.0	25.40	19	13.5	28	57	27	74	08.0	18	22	16	0.3	17.0	22.0	0.140
SILKAC 14 M/HM	15	18.12	36	M14 x 2.00	22.0	26.0	26.99	20	14.0	-	61	30	79	08.0	-	22	-	0.3	19.0	26.0	0.180
SILKAC 16 M/HM	16	19.40	40	M16 x 2.00	22.0	27.0	28.58	21	15.0	32	64	33	83	08.0	23	22	15	0.3	21.0	28.0	0.220
SILKAC 16 M	16	19.40	40	M16 x 1.50	22.0	27.0	28.58	21	15.0	32	64	33	83	08.0	23	22	15	0.3	21.0	28.0	0.220
SILKAC 17 M/HM	17	20.60	42	M16 x 1.50	25.0	31.0	30.16	22	16.0	-	67	34	88	10.0	-	27	15	0.3	22.0	30.0	0.260
SILKAC 18 M/HM	18	21.90	44	M18 x 1.50	25.0	31.0	31.75	23	16.5	35	71	36	92	10.0	25	27	15	0.3	26.0	34.0	0.320
SILKAC 20 M/HM	20	24.40	50	M20 x 1.50	27.5	34.0	34.93	25	18.0	40	77	40	100	10.0	26	30	14	0.3	31.0	40.0	0.420
SILKAC 22 M/HM	22	25.80	50	M22 x 1.50	30.0	37.0	38.10	28	20.0	42	84	43	109	12.0	29	32	15	0.3	38.0	50.0	0.610
SILKAC 25 M/HM	25	29.60	60	M24 x 2.00	33.5	42.0	42.85	31	22.0	47	94	48	124	12.0	32	36	15	0.3	47.0	63.0	0.810
SILKAC 28 M/HM	28	32.30	66	M27 x 2.00	37.0	46.0	47.59	35	25.0	-	103	53	136	12.0	34	41	14	0.3	59.0	81.0	1.200
SILKAC 30 M/HM	30	34.80	70	M30 x 2.00	40.0	50.0	50.80	37	25.0	55	110	56	145	15.0	37	41	17	0.3	63.0	86.0	1.400
	30	34.80	70	M27 x 2.00	40.0	50.0	50.80	37	25.0	55	110	60	145	15.0	37	41	17	0.3	63.0	86.0	1.400

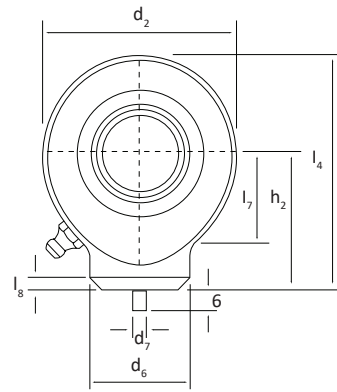
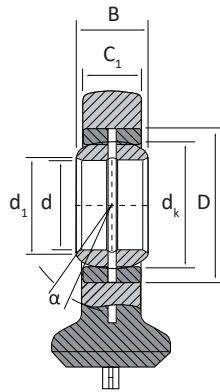
C - Carga dinâmica  
C<sub>0</sub> - Carga estática



Requer manutenção. mediante lubrificação do furo ou do alojamento.

CÓD.	Dimensões em mm															Graus $\approx \alpha$	Dist. das bordas $r_{1\text{min}}$	Carga		Peso Kg
	d	d <sub>1</sub>	d <sub>2</sub>	d <sub>3</sub>	d <sub>6</sub>	d <sub>7</sub>	d <sub>k</sub>	B	C <sub>1</sub>	D	h <sub>2</sub>	l <sub>4</sub>	l <sub>7</sub>	l <sub>8</sub>	W			C	C <sub>0</sub>	
SC 10 ES/HM	10	13.20	29	-	15.0	3	16.00	9	7.00	19	24	38.50	15.0	1.5	-	12	0.3	8.15	15.6	0.041
SC 12 ES/HM	12	15.00	34	-	17.5	3	18.00	10	8.00	22	27	44.00	18.0	1.5	-	11	0.3	10.8	21.6	0.066
SC 15 ES/HM	15	18.40	40	-	21.0	4	22.00	12	10.0	26	31	51.00	20.0	2.0	-	8	0.3	17.0	32.0	0.120
SC 17 ES/HM	17	20.70	46	-	24.0	4	25.00	14	11.10	30	35	58.00	23.0	2.0	-	10	0.3	21.2	40.0	0.190
SC 20 ES/HM	20	24.10	53	-	27.5	4	29.00	16	13.0	35	38	64.50	27.5	2.0	-	9	0.6	30.0	54.0	0.230
SC 25 ES/HM	25	29.30	64	-	33.5	4	35.50	20	17.0	42	45	77.00	33.0	3.0	-	7	0.6	48.0	72.0	0.430
SC 30 ES/HM	30	34.20	73	-	40.0	4	40.70	22	19.0	47	51	87.50	37.5	3.0	-	6	0.6	62.0	95.0	0.640
SC 35 ES/HM	35	39.70	82	-	47.0	4	47.00	25	21.0	55	61	102.0	43.0	3.0	-	6	0.6	80.0	125.0	0.960
SC 40 ES/HM	40	45.00	92	-	52.0	4	53.00	28	23.0	62	69	115.0	48.0	4.0	-	7	0.6	100.0	156.0	1.300
SC 45 ES/HM	45	50.70	102	-	58.0	6	60.00	32	27.0	68	77	128.0	52.0	4.0	-	7	0.6	127.0	208.0	1.800
SC 50 ES/HM	50	56.00	112	-	62.0	6	66.00	35	30.0	75	88	144.0	59.0	4.0	-	6	0.6	156.0	250.0	2.500
SC 60 ES/HM	60	66.80	135	-	70.0	6	80.00	44	38.0	90	100	167.5	72.5	4.0	-	6	1.0	245.0	390.0	3.900
SC 70 ES/HM	70	77.80	160	-	80.0	6	92.00	49	42.0	105	115	195.0	86.0	5.0	-	6	1.0	315.0	510.0	6.600
SC 80 ES/HM	80	89.40	180	-	95.0	6	105.0	55	47.0	120	141	231.0	98.0	5.0	-	6	1.0	400.0	620.0	8.700

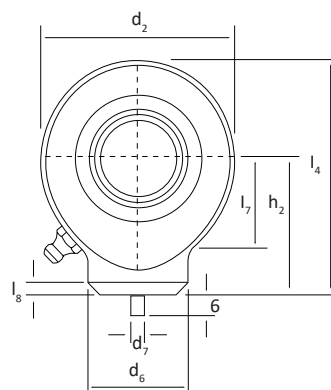
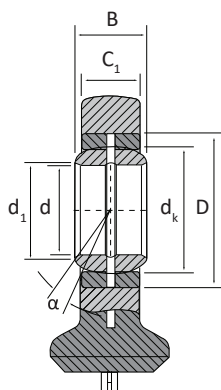
C - Carga dinâmica  
C<sub>0</sub> - Carga estática



Requer manutenção. mediante lubrificação do furo ou do alojamento.

CÓD.	Dimensões em mm																	Graus $\approx \alpha$	Dist. das bordas $r_{1\text{min}}$	Carga		Peso Kg
	d	d <sub>1</sub>	d <sub>2</sub>	d <sub>3</sub>	d <sub>6</sub>	d <sub>7</sub>	d <sub>K</sub>	B <sub>min</sub>	B <sub>max</sub>	C <sub>1</sub>	D	h <sub>2</sub>	l <sub>3</sub>	l <sub>4</sub>	l <sub>7</sub>	l <sub>8</sub>	W			C	C <sub>0</sub>	
SCF 20 ES/HM	20	24.10	50	-	-	-	29.00	19.00	20.00	16	35	38	-	63.00	-	-	-	9	0.6	30	67.00	0.360
SCF 25 ES/HM	25	29.30	55	-	-	-	35.50	23.00	24.00	20	42	45	-	72.50	-	-	-	7	0.6	48	69.50	0.530
SCF 30 ES/HM	30	34.20	65	-	-	-	40.70	28.00	29.00	22	47	51	-	83.50	-	-	-	6	0.6	62	118.0	0.850
SCF 35 ES/HM	35	39.70	83	-	-	-	47.00	30.00	31.00	25	55	61	-	102.5	-	-	-	6	0.6	80	196.0	1.500
SCF 40 ES/HM	40	45.00	100	-	-	-	53.00	35.00	36.50	28	62	69	-	119.0	-	-	-	7	0.6	100	305.0	2.420
SCF 45 ES/HM	45	50.70	110	-	-	-	60.00	40.00	41.50	32	68	77	-	132.0	-	-	-	7	0.6	127	386.0	3.390
SCF 50 ES/HM	50	56.00	123	-	-	-	66.00	40.00	41.50	35	75	88	-	149.5	-	-	-	6	0.6	156	441.0	4.240
SCF 60 ES/HM	60	66.80	140	-	-	-	80.00	50.00	52.56	44	90	100	-	170.0	-	-	-	6	1.0	245	570.0	7.100
SCF 70 ES/HM	70	77.80	164	-	-	-	92.00	55.00	58.00	49	105	115	-	197.0	-	-	-	6	1.0	315	724.0	10.70
SCF 80 ES/HM	80	89.40	180	-	-	-	105.0	60.00	63.00	55	120	141	-	231.0	-	-	-	6	1.0	400	804.0	15.10
	90	98.10	226	-	-	-	115.0	65.00	69.00	60	130	150	-	263.0	-	-	-	5	1.0	490	1340	23.50
	100	109.5	250	-	-	-	130.0	70.00	74.00	70	150	170	-	295.0	-	-	-	7	1.0	610	1516	33.10
	110	121.2	295	-	-	-	140.0	80.00	85.00	70	160	185	-	332.5	-	-	-	6	1.0	655	2340	48.50
	120	135.5	360	-	-	-	160.0	90.00	95.00	85	180	210	-	390.0	-	-	-	6	1.0	950	3210	79.50

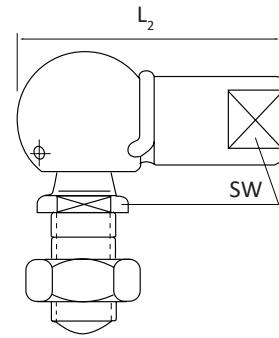
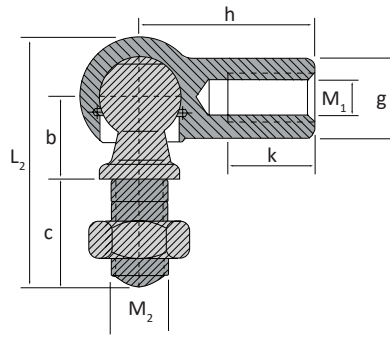
C - Carga dinâmica  
C<sub>0</sub> - Carga estática



Requer manutenção. mediante lubrificação do furo ou do alojamento.

CÓD.	Dimensões em mm																	Graus $\approx \alpha$	Parafuso de travamento	Bloqueio		Carga		Peso Kg
	d	d <sub>1</sub>	d <sub>2</sub>	d <sub>3</sub>	d <sub>4</sub>	d <sub>5</sub>	d <sub>k</sub>	B	C <sub>1</sub>	D	h <sub>2</sub>	l <sub>3</sub>	l <sub>4</sub>	l <sub>5</sub>	l <sub>7</sub>	S <sub>2</sub>	M <sub>A</sub> -Nm			C	C <sub>0</sub>			
SIJ 12 ES/HM	12	15.00	35	M10 x 1.25	17	40	-	10	8.00	-	42	15	58	-	18	13	11	M6 x 14	10	10.8	17.0	0.12		
SIJ 16 ES/HM	16	20.07	45	M12 x 1.25	21	45	-	14	11.0	-	48	17	69	-	22	13	10	M6 x 14	10	21.1	28.5	0.22		
SIJ 20 ES/HM	20	24.10	55	M14 x 1.50	25	55	-	16	13.0	-	58	19	83	-	28	17	9	M8 x 18	25	30.0	42.5	0.43		
SIJ 25 ES/HM	25	29.30	65	M16 x 1.50	30	62	-	20	17.0	-	68	23	99	-	34	17	7	M8 x 18	25	48.0	67.0	0.67		
SIJ 30 ES/HM	30	34.20	80	M20 x 1.50	36	77	-	22	19.0	-	85	29	123	-	38	19	6	M10 x 20	49	62.0	108.0	1.25		
SIJ 40 ES/HM	40	45.00	100	M27 x 2.00	45	90	-	28	23.0	-	105	37	153	-	48	23	7	M10 x 25	49	100.0	156.0	2.16		
SIJ 50 ES/HM	50	56.00	120	M33 x 2.00	55	105	-	35	30.0	-	130	46	188	-	62	30	6	M12 x 30	86	156.0	245.0	3.90		
SIJ 60 ES/HM	60	66.80	160	M42 x 2.00	68	134	-	44	38.0	-	150	57	230	-	74	38	6	M16 x 40	210	245.0	380.0	7.15		

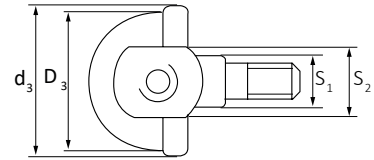
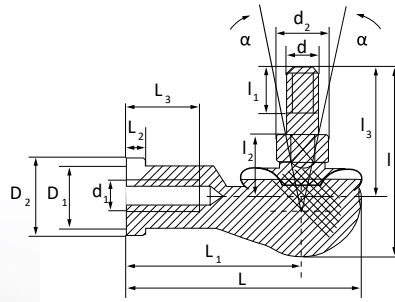
C - Carga dinâmica  
C<sub>0</sub> - Carga estática



Requer manutenção. mediante lubrificação do furo ou do alojamento.

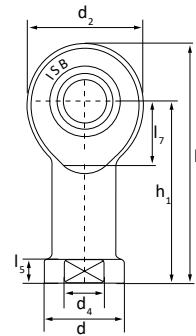
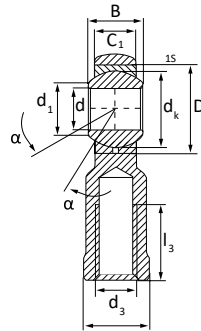
CÓD.	Dimensões em mm													Graus $\approx \alpha$	Dist. Arestas $r_{1min}$	Carga		Peso Kg
	d	$d_{+/-0.3}$	$e_{h11}$		$f_{+/-0.2}$		g	$h_{+/-0.3}$	$k_{min}$	$L_1$	$L_2$	$M_{1(6H)} - M_{2(6H)}$	$SW_{h14}$			C	$C_0$	
A-AS 8	08	11	05	04.00	07.50	-	08	24.50	12	31	32	M05 x 0.80	08	-	-	-	-	0.014
A-AS 10	10	11	06	04.50	08.00	-	10	24.50	12	31	32	M06 x 1.00	08	-	-	-	-	0.024
A-AS 13	13	13	08	05.00	08.00	10.00	13	29.50	14	40	39	M08 x 1.25	11	-	-	-	-	0.053
A-AS 16	16	17	10	06.00	10.00	13.00	16	34.00	18	49	46	M10 x 1.50	13	-	-	-	-	0.097
A-AS 16-1	16	17	10	06.00	13.00	-	16	34.00	18	49	46	M12 x 1.75	13	-	-	-	-	0.097
A-AS 19	19	23	14	12.00	18.00	-	22	45.00	22	66	60	M14 x 2.00	17	-	-	-	-	0.218
A-AS 19	19	23	14	12.00	18.00	-	22	45.0	22	66	60	M14 x 1.50	17	-	-	-	-	0.218

C - Carga dinâmica  
 $C_0$  - Carga estática



CÓD.	Dimensões em mm																Graus	Carga	Peso		
	d	d <sub>1</sub>	d <sub>2</sub>	d <sub>3</sub>	D <sub>1</sub>	D <sub>2</sub>	D <sub>3</sub>	l	l <sub>1</sub>	l <sub>2</sub>	l <sub>3</sub>	L	L <sub>1</sub>	L <sub>2</sub>	L <sub>3</sub>	S <sub>1</sub>	S <sub>2</sub>	≈α	C	C <sub>0</sub>	Kg
SQ 5 C RS	5	M5 x 0.8	9	20	9	11	16	29	8	10	21	35	27	4	14	7	9	25	2.7	9.2	0.026
SQ 6 C RS	6	M6 x 1	10	20	10	13	19	35.5	11	11	26	40	30	5	14	8	11	25	3.6	12	0.039
SQ 8 C RS	8	M8 x 1.25	12	24	12.5	16	23	42.5	12	14	31	48	36	5	17	10	14	25	5.7	19	0.068
SQ 10 C RS	10	M10 x 1.25	14	30	15	19	27	50.5	15	17	37	57	43	6.5	21	11	17	25	8.2	27	0.112
SQ 10 C RS-1	10	M10 x 1.5	14	30	15	19	27	56.5	21	17	43	57	43	6.5	21	11	17	15	8.2	27	0.112
SQ 12 C RS	12	M12 x 1.25	7	32	17.5	22	31	57.5	17	19	42	66	50	6.5	25	15	19	25	11	37	0.164
SQ 12 C RS-1	12	M12 x 1.75	7	32	17.5	22	31	64.5	24	19	49	66	50	6.5	25	15	19	25	11	37	0.164
SQ 14 C RS	14	M14 x 1.5	19	38	20	25	35	73.5	22	21.5	56	75	57	8	26	17	22	25	14	48	0.254
SQ 14 C RS-1	14	M14 x 2	9	38	20	25	35	79.5	28	21.5	62	75	57	8	26	17	22	25	14	48	0.254
SQ 16 C RS	16	M16 x 1.5	22	44	22	27	39	79.5	23	23.5	60	84	64	8	32	19	22	20	16	53	0.336
SQ 16 C RS-1	16	M16 x 2	22	44	22	27	39	85.8	29	23.5	66	84	64	8	32	19	22	20	16	53	0.336
SQ 18 C RS	18	M18 x 1.5	23	45	25	31	44	90	25	26.5	68	93	71	10	34	20	27	20	18	61	0.464
SQ 20 C RS	20	M20 x 1.5	27	50	27.5	34	44	90	25	27	68	99	77	10	35	24	30	20	18	61	0.538
SQ 22 C RS	22	M22 x 1.5	27	52	30	37	50	95	26	28	70	109	84	12	41	24	32	16	22	75	0.713

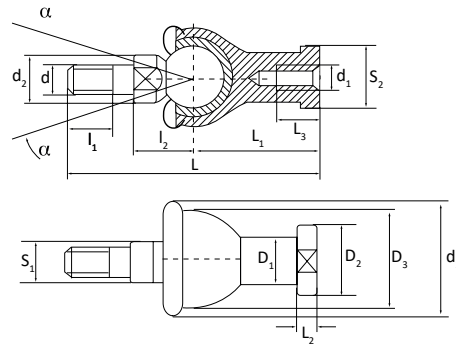
C - Carga dinâmica  
C<sub>0</sub> - Carga estática



Isento manutenção.

CÓD.	Dimensões em mm																Graus $\approx \alpha$	Dist. Arestas $r_{\min}$	Carga		Peso Kg
	d	d <sub>1</sub>	d <sub>2</sub>	d <sub>3</sub>	d <sub>4</sub>	d <sub>5</sub>	d <sub>k</sub>	B	C <sub>1</sub>	D	h <sub>1</sub>	I <sub>3</sub>	I <sub>4</sub>	I <sub>5</sub>	I <sub>7</sub>	W			C	C <sub>0</sub>	
SIKB 5 F/HM	5	7.7	18	M5 x 0.8	9	12	11.11	8	7.5	13	27	8	36	4	10	10	13	0.3	3.6	4.6	0.01
SIKB 6 F/HM	6	8.9	20	M6 x 1	10	13	12.70	9	7.5	16	30	9	40	5	11	10	13	0.3	4.7	5.2	0.01
SIKB 8 F/HM	8	10.3	24	M8 x 1.25	12.5	16	15.88	12	9.5	19	36	12	48	5	13	13	14	0.3	7.6	8.2	0.03
SIKB 10 F/HM	10	12.9	28	M10 x 1.5	15	19	19.05	14	11.5	22	43	15	58	6.5	15	16	13	0.3	12	15	0.08
SIKB 10 F/VZ019/HM	10	12.9	28	M10 x 1.25	15	19	19.05	14	11.5	22	43	15	58	6.5	15	16	13	0.3	12	15	0.08
SIKB 12 F/HM	12	15.4	32	M12 x 1.75	17.5	22	22.23	16	12.5	26	50	18	67	6.5	17	18	13	0.3	14	19	0.12
SIKB 12 F/VZ019/HM	12	15.4	32	M12 x 1.25	17.5	22	22.23	16	12.5	26	50	18	67	6.5	17	18	13	0.3	14	19	0.12
	14	16.8	36	M14 x 1.5	21	25	25.40	19	14.5	28	57	21	76	8	18	21	16	0.3	19	24	0.14
	14	16.8	36	M14 x 1.5	21	25	25.40	19	14.5	28	57	21	76	8	18	21	16	0.3	19	24	0.14
	15	18.2	36	M14 x 2	22	26	26.99	20	15	-	61	22	79	8	-	22	-	0.3	22	27	0.19
SIKB 16 F/HM	16	19.3	42	M16 x 2	22	27	28.57	21	15.5	32	64	24	85	8	23	24	15	0.3	23	29	0.22
SIKB 16 F/VZ019/HM	16	19.3	42	M16 x 1.5	22	27	28.57	21	15.5	32	64	24	85	8	23	24	15	0.3	23	29	0.22
	18	21.8	44	M18 x 1.5	25	31	31.75	23	17.5	35	71	27	94	10	25	27	15	0.3	29	34	0.32
SIKB 20 F/HM	20	24.3	50	M 20 x 1.5	27.5	34	34.93	25	18.5	40	77	30	102	10	26	30	14	0.3	34	40	0.42
	22	25.8	54	M 22 x 1.5	30	37	38.10	28	21	42	84	33	112	12	29	34	15	0.3	42	50	0.61
	25	29.5	60	M 24 x 2	33.5	42	42.85	31	23	47	94	36	124	12	32	36	15	0.3	52	57	0.81
	28	32.3	66	M 27 x 2	37	46	47.59	35	26	-	103	41	136	14	34	41	15	0.3	66	69	1.20
	30	34.8	70	M 30 x 2	40	50	50.80	37	27	55	110	45	145	15	37	46	17	0.3	73	77	1.40
SIKB 35 F/HM	35	39	81	M 36 x 2	46	58	57.15	43	28	-	125	56	165.5	17	-	50	16	0.3	94	97	1.70
	40	-	91	M 42 x 2	53	65	66.67	49	33	-	142	60	187.5	19	-	55	16	0.3	-	-	2.40
	50	-	117	M 48 x 2	65	75	82.5	60	45	-	160	65	218.5	23	-	65	12	0.3	-	-	5.00

C - Carga dinâmica  
C<sub>0</sub> - Carga estática



CÓD.																	Graus	Carga		Peso
	d	d <sub>1</sub>	d <sub>2</sub>	d <sub>3*</sub>	D <sub>1</sub>	D <sub>2</sub>	D <sub>3</sub>	l <sub>1</sub>	l <sub>2</sub>	L	L <sub>1</sub>	L <sub>2</sub>	L <sub>3</sub>	S <sub>1</sub>	S <sub>2</sub>	≈α	C	C <sub>0</sub>	Kg	
	5	M 5x0.8	9	20	9	11	17	8	11	46	24	4	12	7	9	15	1.7	5.7	0.025	
SQZ 6 C RS	6	M 6x1	10	20	10	13	20	11	12.2	55.2	28	5	15	8	11	15	2.2	7.5	0.040	
SQZ 8 C RS-1		M 8x1.25	12	24	12.5	16	24	12	16	65	32	5	16	10	14	15	3.3	11	0.075	
SQZ 10 C RS-1		M 10x1.25	14	30	15	19	28	15	19.5	74.5	35	6.5	18	11	17	15	4.8	16	0.121	
		M 10x1.5	14	30	15	19	28	21	19.5	80.5	35	6.5	18	11	17	15	4.8	16	0.121	
		M 12x1.25	17	32	17.5	22	32	17	21	84	40	6.5	20	15	19	15	6.6	22	0.187	
		M 12x1.75	17	32	17.5	22	32	24	21	91	40	6.5	20	15	19	15	6.6	22	0.187	
		M 14x1.5	19	38	20	25	236	22	23.5	103	45	8	25	17	22	11	8.7	29	0.277	
		M 14x2	19	38	20	25	36	28	23.5	109	45	8	25	17	22	11	8.7	29	0.277	
		M 16x1.5	22	44	22	27	40	23	25.5	112	50	8	27	19	22	11	10	33	0.361	
		M 16x2	22	44	22	27	40	29	25.5	118	50	8	27	19	22	11	10	33	0.361	
		M 18x1.5	23	45	25	31	45	25	31	130.50	58	10	32	20	27	11	11	37	0.839	
		M 20x1.5	27	50	27.5	34	45	25	29	133	63	10	38	24	30	7.5	11	37	0.575	
		M 22x1.5	27	52	30	37	50	26	33	145	70	12	43	24	32	7.5	14	46	0.757	

C - Carga dinâmica  
C<sub>0</sub> - Carga estática